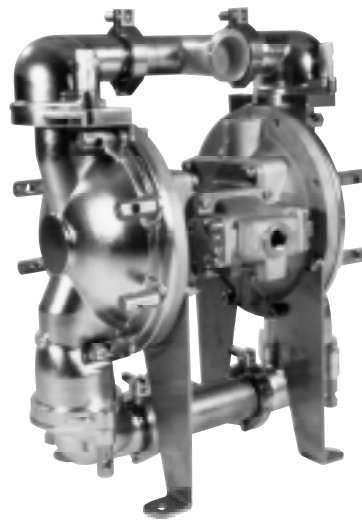


**WARREN  
RUPP®**

Quality System  
ISO9001 Certified

Environmental  
Management System  
ISO14001 Certified

**IDEX**  
IDEX CORPORATION



# SandPIPER®

## BALL VALVE SSB2-A TYPE 3

### 2" x 2 1/2" Air-Powered Double-Diaphragm Sanitary Pump

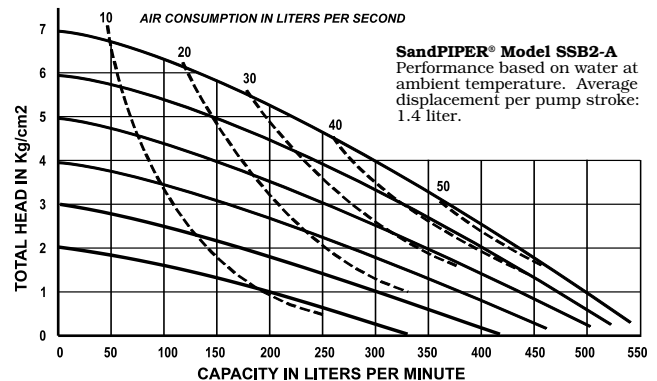
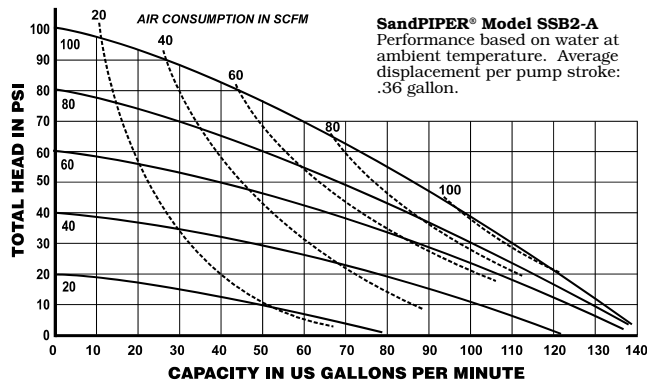
ENGINEERING, PERFORMANCE  
& CONSTRUCTION DATA

INTAKE/DISCHARGE PIPE SIZE	CAPACITY	AIR VALVE	SOLIDS-HANDLING	HEADS UP TO
Suction: 2 1/2" Sanitary Process Clamp Fitting Discharge: 2" Sanitary Process Clamp Fitting	0 to 125 gallons per minute (0 to 473 liters per minute)	No-lube, no-stall design	1/4" (6mm)	125 psi or 289 ft. of water (8.8 Kg/cm <sup>2</sup> or 88 meters)

### PERFORMANCE CURVES

(SandPIPER® pumps are designed to be powered **only** by compressed air)  
Temperature Limit: 212°F - 100°C MAXIMUM

**This pump is USDA-Accepted for meat and poultry.**



### MATERIALS OF CONSTRUCTION

SSB2-A Type 3	Manifold	Outer Chamber	Inner Chamber	Outer Diaphragm Plate	Inner Diaphragm Plate	Intermediate Housing	Diaphragm Rod	Valve Seat	Hardware	Diaphragm	Ball Valve Material	Air Valve	Shipping Weight (lbs)
TF-3-SS	316SS	WR-S	AL356-T6◇	WR-S	AL380DC	356-T6AL◇	416SS	FDA-N	302/304SS	FDA-N	FDA-N	AL356-T6◇	120
TY-3-SS	316SS	WR-S	AL356-T6◇	WR-S	AL380DC	356-T6AL◇	416SS	FDA-I	302/304SS	FDA-I	FDA-I	AL356-T6◇	120

#### Meanings of Abbreviations:

◇ = Electropolished  
◇ = Electroless Nickel Plated  
AL = Aluminum

DC = Die Cast  
FDA-I = Food Grade EPDM  
FDA-N = Food Grade Nitrile

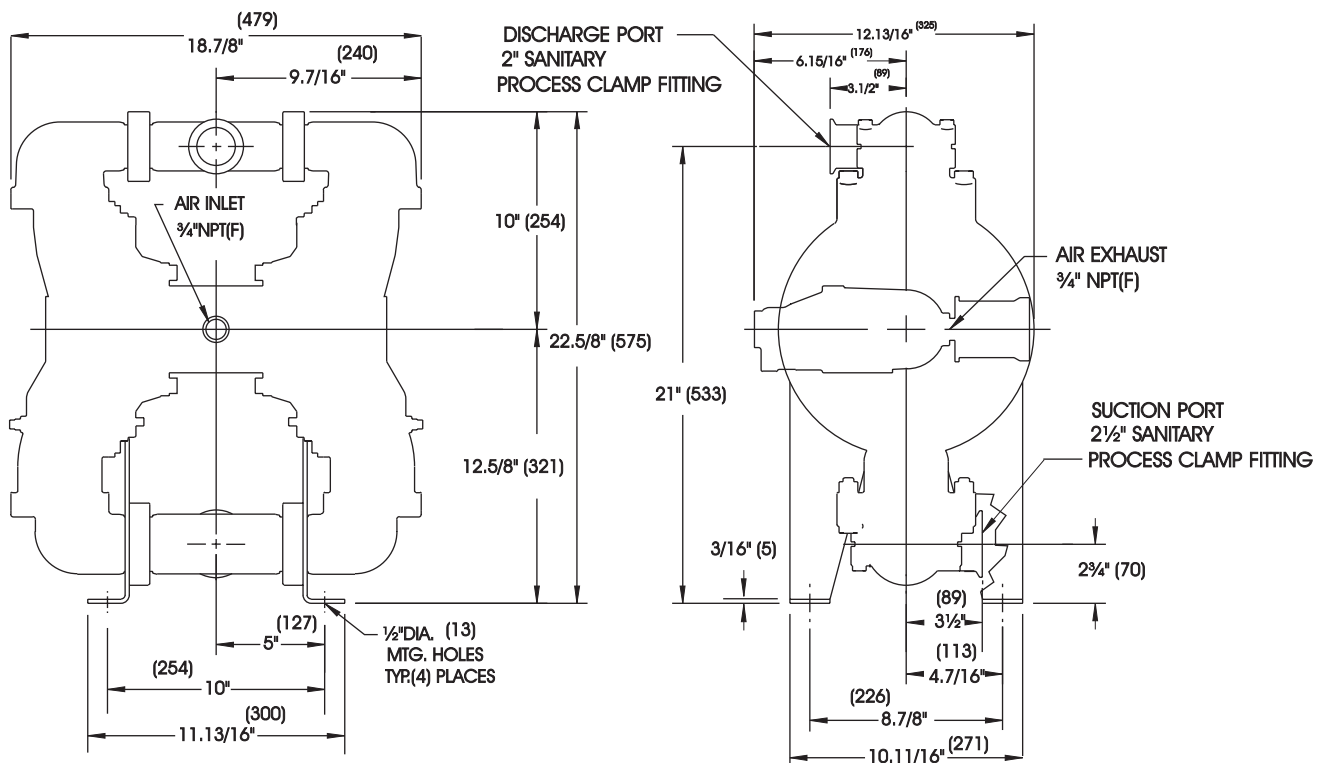
PP = Polypropylene-Glass Filled  
SS = Stainless Steel  
WR-S = Alloy Type 316SS

# SSB2-A BALL VALVE SANITARY

# SandPIPER®

MATERIALS	Operating Temperatures		
	Maximum	Minimum	Optimum
<b>NITRILE</b> General purpose, oil-resistant. Shows good solvent, oil, water and hydraulic fluid resistance. Should not be used with highly polar solvents like acetone and MEK, ozone, chlorinated hydrocarbons and nitro hydrocarbons.	190°F 88°C	-10°F -23°C	50°F to 140°F 10°C to 60°C
<b>EPDM</b> Shows very good water and chemical resistance. Has poor resistance to oil and solvents, but is fair in ketones and alcohols.	212°F+ 100°C	-10°F -23°C	50°F to 212°F 10°C to 100°C
<b>WR-S</b> Warren Rupp Alloy Type 316 Stainless Steel equal to or exceeding ASTM specification A743 CF-8M for corrosion resistant iron chromium, iron chromium nickel, and nickel based alloy castings for general applications. Commonly referred to as 316 Stainless Steel in the pump industry.			
For specific applications, always consult "Chemical Resistance Chart" Technical Bulletin.		*Definite reduction in service life. **Minimal reduction in service life at ends of range.	

Dimensions are 1/8"  
Figures in parenthesis = millimeters



**SUCTION 2 1/2" QUICK CONNECT SANITARY PROCESS CLAMP FITTINGS**  
**DISCHARGE 2" QUICK CONNECT SANITARY PROCESS CLAMP FITTINGS**  
**3/4" NPT (F) AIR INLET PORT • 3/4" NPT (F) AIR EXHAUST PORT**