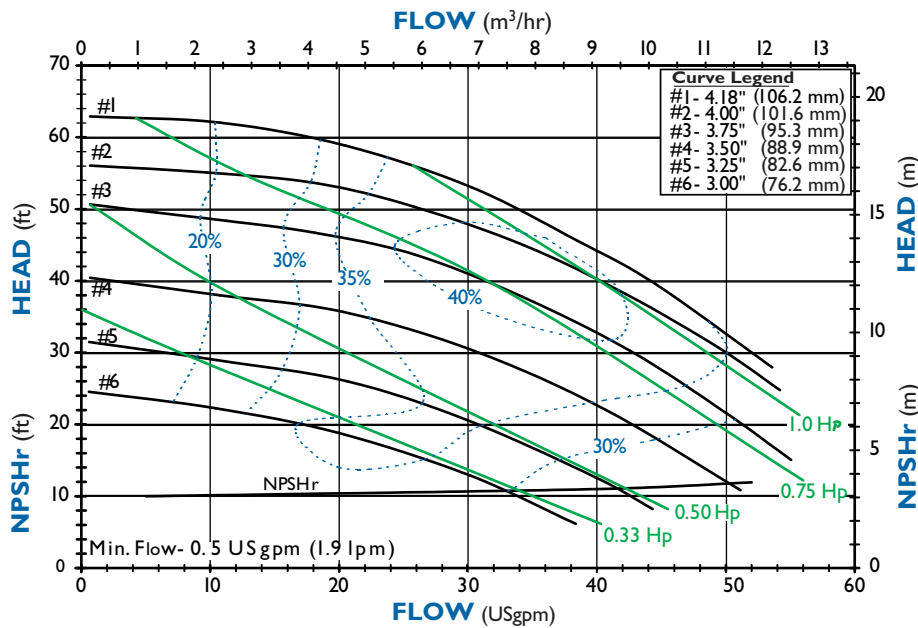


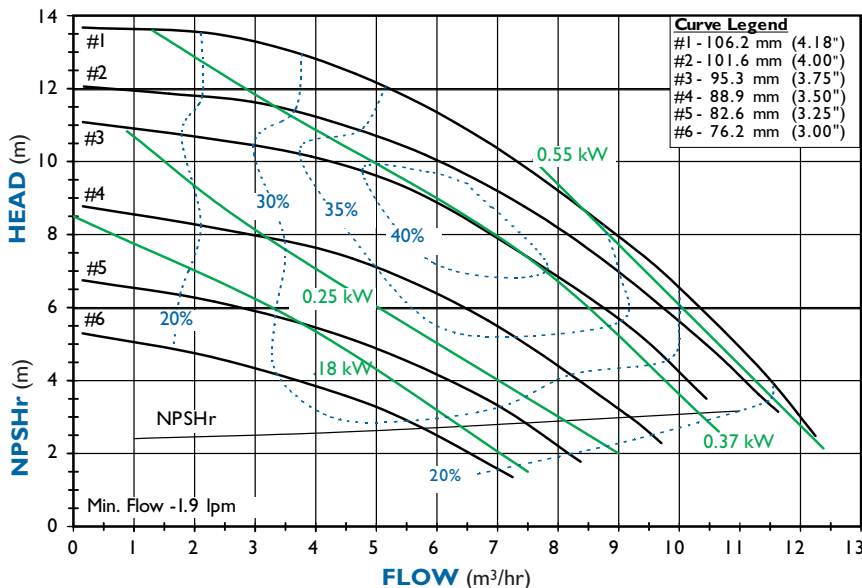
SP Series: Model SPI0



SPI0 PERFORMANCE Flooded Suction 3450 RPM*



SPI0 PERFORMANCE Flooded Suction 2900 RPM*



Notes: Performance curves above are based on flooded suction.

*Performance will vary with suction lift conditions. For performance at various suction lifts, see curve book on FTI web site (www.finishthompson.com) or contact factory.

FEATURES & CAPABILITIES

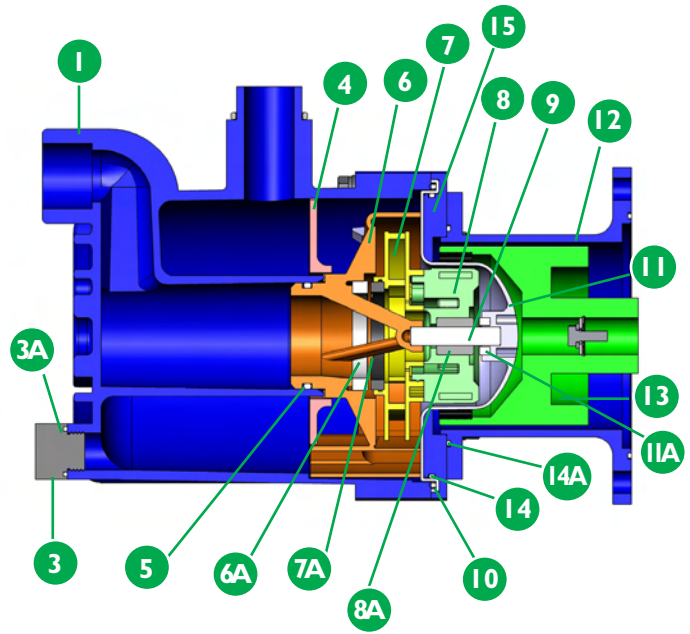
- + Self-priming, magnetic drive
- + Five-year warranty
- + Provides up to 25 ft. (7.6 m) lift or equivalent
- + Primes 15 ft. (4.6 m) in < 2 minutes with maximum diameter impeller
- + Retains fluid for re-priming when shut off without a check valve
- + Extended run dry ability (with carbon bushing)
- + High operating efficiency
- + Polypropylene or PVDF construction
- + Powerful neodymium magnets
- + Close-coupled design
- + Threaded (NPT or BSP), union or flange connections
- + Back pullout design
- + Mounts to NEMA and (B5 & B14) IEC motor frames
- + Easy set measurement free drive
- + ISO 1940 G2.5 balancing
- + CE certified
- + High working pressure up to 80 psi (5.5 bar)
- + Specific gravity over 1.8
- + Polypropylene—180° F (82° C)
- + PVDF—220° F (104° C)

APPLICATIONS

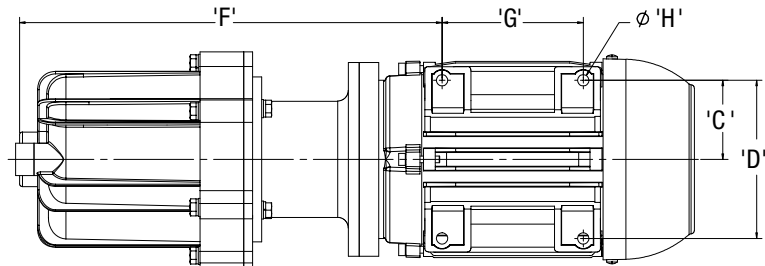
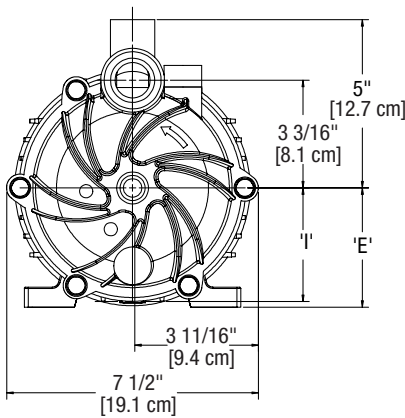
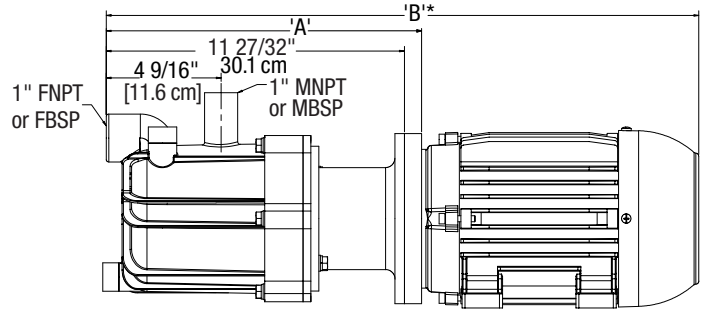
- + Rail cars
- + Tanker trucks
- + Tanks with an opening on top
- + Bulk storage to day or process tank transfer
- + Sumps and reservoirs
- + Below grade storage tanks
- + Over-the-wall applications
- + When run-dry protection is needed
- + and many more!

| Description | Polypropylene Models | PVDF Models |
|--|---|--|
| 1 Housing | | |
| 4 Separator plate | Glass-fiber reinforced polypropylene | Carbon-fiber reinforced PVDF |
| 6 Inner volute | | |
| 7 Impeller | | |
| 3A, 5, 10 O-ring options | FKM, EPDM | |
| 3 Fill and drain plugs* | Polypropylene | PVDF |
| 6A Inner volute thrust ring options | High purity alumina ceramic, silicon carbide | |
| 7A Impeller thrust washer options | Molybdenum disulfide filled PTFE, silicon carbide | |
| 8 Inner drive | Neodymium iron boron magnets encapsulated in unfilled polypropylene | Neodymium iron boron magnets encapsulated in unfilled PVDF |
| 8A Bushing options | Carbon, PTFE, high purity alumina ceramic, silicon carbide | |
| 9 Shaft options | High purity alumina ceramic, Hastelloy® C, silicon carbide | |
| 11 Barrier | Glass-fiber reinforced polypropylene | Carbon-fiber reinforced PVDF |
| 11A Barrier thrust ring | High purity alumina ceramic | |
| 12 Motor adapter | Glass fiber reinforced polypropylene | |
| 13 Outer drive magnets | Nickel-plated neodymium iron boron magnets/steel | |
| 14, 14A, 14B Motor adapter o-rings | Buna N (std.), FKM, EPDM | |
| 15 Clamp ring | Carbon steel | |

*Fill plug not shown



Hastelloy® C is a registered trademark of Haynes International, Inc.



| Frame Size | A | B* | C | D | E |
|--------------|---------------------|---------------------|-------------------|--------------------|-------------------|
| NEMA 56C | 11-27/32" (30.1 cm) | 22-3/32" (56.1 cm) | 2-7/16" (6.2 cm) | 4-7/8" (12.4 cm) | 3-1/2" (8.9 cm) |
| NEMA 145TC | 11-27/32" (30.1 cm) | 23-1/16" (58.6 cm) | 2-3/4" (7.0 cm) | 5-1/2" (14.0 cm) | 3-1/2" (8.9 cm) |
| IEC63 B14/B5 | 12-3/16" (31.0 cm) | 18-31/32" (48.2 cm) | 1-31/32" (5.0 cm) | 3-15/16" (10.0 cm) | 2-15/32" (6.3 cm) |
| IEC71 B14/B5 | 12-3/16" (31.0 cm) | 20-1/2" (52.0 cm) | 2-7/32" (5.6 cm) | 4-13/32" (11.2 cm) | 2-25/32" (7.1 cm) |
| IEC80 B14/B5 | 12-17/32" (31.8 cm) | 21-3/4" (55.2 cm) | 2-15/32" (6.3 cm) | 4-29/32" (12.5 cm) | 3-5/32" (8.0 cm) |
| IEC90 B14/B5 | 12-17/32" (31.8 cm) | 23-17/32" (59.8 cm) | 2-3/4" (7.0 cm) | 5-1/2" (14.0 cm) | 3-17/32" (9.0 cm) |

| Frame Size | F | G | H | I | Pump Wt. - lbs (kg) | Motor Wt.** - lbs. (kg) |
|--------------|---------------------|--------------------|-----------------|--------------------|---------------------|-------------------------|
| NEMA 56C | 14-19/32" (37.1 cm) | 3" (7.6 cm) | 11/32" (0.9 cm) | 3-3/8" (8.6 cm) | 13 (5.9) | 28 (12.7) |
| NEMA 145TC | 14-7/32" (36.1 cm) | 5" (12.7 cm) | 11/32" (0.9 cm) | 3-3/8" (8.6 cm) | 13 (5.9) | 32 (14.5) |
| IEC63 B14/B5 | 13-5/16" (33.8 cm) | 3-5/32" (8.0 cm) | 9/32" (0.7 cm) | 3-3/8" (8.6 cm) | 16.5 (7.5) | 17 (7.7) |
| IEC71 B14/B5 | 14-1/16" (35.7 cm) | 3-17/32" (9.0 cm) | 9/32" (0.7 cm) | 3-3/8" (8.6 cm) | 16.5 (7.5) | 22 (10.0) |
| IEC80 B14/B5 | 14-7/16" (36.7 cm) | 3-15/16" (10.0 cm) | 13/32" (1.0 cm) | 3-15/16" (10.0 cm) | 19 (8.6) | 37.5 (17.0) |
| IEC90 B14/B5 | 14-23/32" (37.4 cm) | 3-15/16" (10.0 cm) | 13/32" (1.0 cm) | 3-15/16" (10.0 cm) | 19 (8.6) | 37.5 (17.0) |

Dimensions and weights are for reference only.

*Varies with motor manufacturer.

** Depends upon motor manufacturer and style of motor chosen.

